



Thermal Transfer Desktop Label Printer LP4 Series

Your winning code



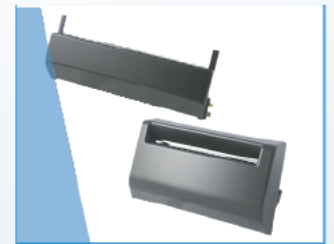
12hr nonstop printing
without overheat shutdown



Smallest label height
"3mm" support



Clamshell double-walled
rugged structure



Screwdriver-free installation
cutter and peeler



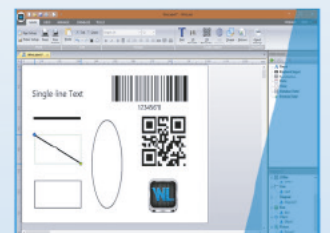
Intuitive display panel



0.5" or 1" core
ribbon loading support



Cover closing safety design



Free labelling software
supports database function



LP4 SERIES-Desktop Label Printer

MODEL	LP423N	LP433N	LP423A	LP433A
Printing method	Thermal Transfer / Direct Thermal			
Resolution	203 DPI	300 DPI	203 DPI	300 DPI
Max. print speed	127 mm (5") / second	102 mm (4") / second	127 mm (5") / second	102 mm (4") / second
Max. print width	101.6 mm (4")	101.6mm (4")	101.6 mm (4")	101.6mm (4")
Max. print length	4572mm (180")	2032mm (80")	4572mm (180")	2032mm (80")
Enclosure	Double - walled plastic			
Physical dimension	220mm(W) x 198mm(H) x 288mm(D) 8.7"(W) x 7.8"(H) x 11.3"(D)			
Weight	2.5 KG			
Label roll capacity	127 mm (5")OD			
Ribbon	300M length, max. OD 67 mm, 1" core 100M length, max. OD 38.25 mm, 0.5" core			
Ribbon width	25.4 mm ~ 110 mm (1" ~ 4.3")			
Processor	32-bit RISC CPU			
Memory	8MB Flash memory, 16MB SDRAM	8MB Flash memory, 16MB SDRAM, SD slot for expansion up to 32GB		
Power	External universal switching power supply, Input: AC 100-240V, 2.5A, 50-60Hz, output: DC 24V, 2.5A, 60W			
Operation switch, Button, LED	1 feed button, 8 LEDs	4 buttons, 2 LEDs, 1 LCD (2.13", Resolution: 128x64), 1 Buzzer		
Interface	USB 2.0, RS-232 Ethernet 10/100 Mbps (option) Bluetooth(option), Wireless 802.11 b/g/n (option)	USB 2.0, RS-232, USB Host, Parallel Ethernet 10/100 Mbps		
Sensors	Transmissive gap sensor, Reflective sensor (adjustable), Ribbon end sensor, Cover open sensor, Paper near-end sensor (option)			
Internal fonts	Seven kinds of bitmap fonts			
Bar code	1D bar code : Code 11, Code 39, Code 93, Code 128, Codabar, EAN/JAN-8, EAN/JAN-13, Interleaved 2-of-5, ITF-14, MSI Pleassy, PostCode, Telepen, UPC-A, UPC-E, UCC-128, GS1-128, Standard 2 of 5, Industrial 2 of 5 2D bar code : Code 16K, Code 49, Aztec Code, QR Code, PDF417, Micro PDF417, Data Matrix, Grid Matrix, Micro QR Code, MaxiCode			
Printer language	WPL (ZPL, EPL, TSPL, DPL Auto Switch)			
Dealer options	Cutter · Peeler dispenser · External label stand			
Media width	15 ~ 110 mm (0.59" ~ 4.3")			
Media thickness	0.06 ~ 0.19 mm (2.36 ~ 7.48 mil)			
Media core diameter	25.4 mm (1")			
Label length	3 ~ 4,572 mm (0.12" ~ 180")	3 ~ 2,032 mm (0.12" ~ 80")	3 ~ 4,572 mm (0.12" ~ 180")	3 ~ 2,032 mm (0.12" ~ 80")
Real time clock	RTC (battery is not included)		RTC (battery is included)	
Storage condition	-40 ~ 60°C, 10~ 90% (non-condensing)			
Operation condition	5 ~ 40°C, 25 ~ 85% (non-condensing)			
Safety regulation	CE Class B, FCC Class B, CCC, CB, BIS			
Bundled software	"WinLabel" label design software with database function, Windows driver, Printer utility			
Platform support	Windows XP SP3, Vista, 7, 8, 8.1, 10 and Server 2003, 2008, 2012, 2012R2(32/64 bit) SDK: Android, ActiveX, Windows(C++/C#/VB)			



Cutter Module



Peeler Module



USB RS232



Parallel USB Host USB Ethernet RS232



Made in Taiwan Copyright © Wincode Technology Co, Ltd. All rights reserved. Features and specifications are subject to change without prior notice.



WINCODE TECHNOLOGY CO., LTD
Tel : +886-2-29171759
E-mail : sales@wincodetek.com



www.wincodetek.com