



DIESEL

ANSER™

2016/02/02 10:57:09

Print Preview

DIESEL

Real-time Printing Report

Editor

U2
DIESEL



The integration of quality, efficiency, and cost saving.
Introducing the latest revolutionary printer, the U2-Diesel.

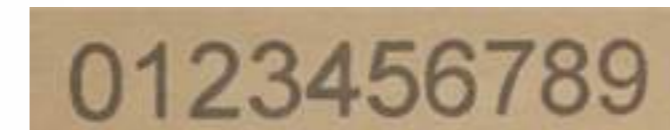
Comparison Items	U2-Diesel Ink Jet Printer	LCP Large Character Printer
1. Lower printer cost	✓	-
2. Higher print resolution	✓	-
3. Higher print speed	✓	-
4. No ink leakage	✓	-
5. No-maintenance	✓	-
6. No consumable parts	✓	-
7. No technician required	✓	-
8. Lower price-per-print	✓	-
9. Lower total cost of ownership	✓	-

U2TM
DIESEL

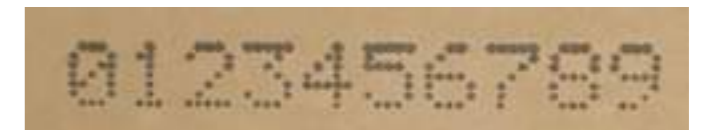


Print more, Save more !

- Equivalent Print to 5-Gallon Ink Barrel
- Exclusive Ink Formulation
- Cost-effective 420 Bulk Ink Solution



Printed by U2-Diesel



Printed by Large Character Printer



U2-Diesel Specifications:

Display	3.5" Color LCD with LED backlight
User-interface	Simple and easy-to-use operating system
Input Device	Pocket-sized IR remote keypad
Available Languages	English, Japanese, French, German, Spanish, Portuguese, Russian, Korean, Italian, Turkish, Hungarian, Slovak, Czech, Swedish, Romanian, Serbian, Bulgarian, Chinese (Traditional & Simplified)
LED Indicators	Alarm, Ink low, print, run, remote on/off
Print Engine	Hewlett-Packard Thermal Ink Jet technology
Print Resolution & Print Speed	600 x 300 dpi (76.2 m/min) Print quality is resolution & speed dependent.
Print Distance	Recommended 6mm
Print Height	Up to 4 lines and 12.7mm (0.5"). Selectable font size from 2.7mm, 3.6mm, 5.5mm, 8mm, 10mm, 12.7mm
Print Capability	Alphanumeric, logos, date/time, shift code, counter, lot box code
Barcodes	EAN8, EAN13, EAN14, EAN128, UPCA, UPCE, CODE39, CODE128, TF14 (SCC-14), NVE18 (SSCC-18), C25INTER, CODABAR, PDF417, DATAMATRIX, QR CODE
Electrical Requirements	AC 100V~240V, 50/60Hz
Weight	0.49kg (1.08 lb.) - excluding cartridge and bracket
Dimensions (L/W/H)	114x76x60 (mm)
Mounting Orientation	Horizontal or downside
Message Storage Capacity	Store up to 999 messages
Operating Temperature	5°C – 40°C (41°F – 104°F)
Data Interface	RS485 & USB port

Optional Accessories:

Encoder	Provide high print quality on unstable conveyor
Photocell	Provide more reliable and precise sensing parameter
Alarm Kit	Alert users in the event of an incident



WWW.ANSER-U2.COM



ANSER CODING INC. | info@anser-u2.com